

75MM

Instruction Manual LCD Display Voice Recognition Alarm Clock

Copyright © 2008 Eric Beare Associates Ltd.

Features:

- Voice recognition for setting the alarm or the time or
- Manual button set
- Displays 12-hour time
- Single alarm
- Snooze
- Blue backlight

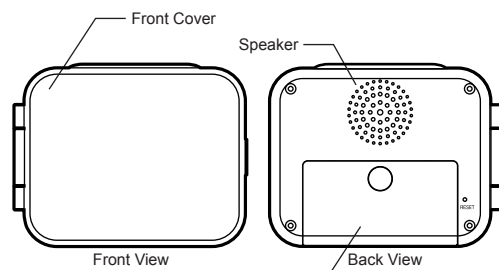
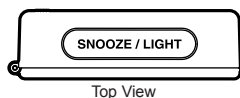


Fig.A

Batteries Installation and Replacement:

- Remove battery cover.
- Insert 3 x "AAA" sized batteries with the correct polarity as indicated in the battery compartment. (see Fig.B)
- The clock will display 12:00. Press the bar button "snooze" once and the backlight will glow for 5 seconds.
- Replace battery cover.

Note: Do not mix new and old batteries together. Do not mix alkaline, standard, or rechargeable batteries together.

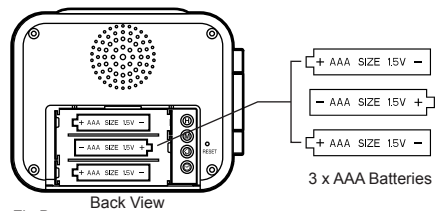


Fig.B

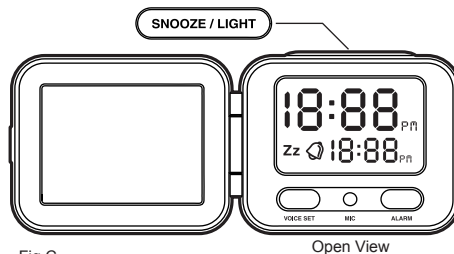


Fig.C

Using Voice Recognition to Set the Time and Alarm

- Setting the Time -

- Press the "VOICE SET" button once. The backlight and voice recognition are activated. (see Fig.C)
- The clock will say "Would you like to set the time or set the alarm?"
- Please say "Time" towards the microphone "MIC" within 3 seconds.
- The time digits will start flashing.

Note: If you do not say the word "Time" within 3 seconds the voice recognition will time out and the clock will say "I'm sorry, I didn't understand". Please say "Time" again.

- The clock will then say "Please tell me the time, including AM or PM."
- Please say the desired time. For example, if it is 11:50 AM, say "Eleven fifty AM." You must say AM or PM. Say the time in a natural way after the clock finishes speaking, as if you were speaking to someone nearby.
- The clock will recognize the spoken time as "11:50 am" and the time will be set.
- The time digits stop flashing.

Note: If the voice command is not recognized, or the time is not said for more than 3 seconds, the clock will say "I'm sorry, I didn't get that. Please tell me the current time; for example, 3:15 pm". Say the time again.

- Setting the Alarm Time -

- Press the "VOICE SET" button once. The back light and voice recognition are activated. (see Fig.C)
- The clock will say "Would you like to set the time or set the alarm?"
- Please say "Alarm" towards microphone "MIC" within 3 seconds.

- The bell icon and alarm time digits appear on display and 12:00 will flash.

Note: If you do not say the word "Alarm" within 3 seconds the function will time out and the clock will say "I'm sorry, I didn't understand". Please say "Alarm" again.

- The voice recognition clock will then say "Please say the time you would like the alarm to sound, including AM or PM."
- Please say the desired time. For example, if you would like the alarm to sound at 6:00 AM, say "six o'clock AM". You must say AM or PM. Say the time in a natural way after the clock finishes speaking, as if you were speaking to someone nearby.
- The clock will recognize the spoken time as "6:00 AM" and the alarm time will be set.
- The alarm time digits will stop flashing.

Note: If the voice command is not recognized, or the time is not said for more than 3 seconds, the clock will say "I'm sorry, I didn't get that. Please tell me the time you would like the alarm set. For example, 7:30 AM." Say the alarm time again.

- Activating or Deactivating the Alarm -

- After you set the desired alarm time, make sure the bell icon is shown. If it is not shown, press the "Alarm" button once and the bell icon will appear.
- When your desired alarm time arrives, the alarm will sound for 1 minute. After one minute the alarm will snooze.
- The symbol "zz" will flash and 10 minutes later the alarm sound will go off again. This function will activate twice and then the alarm will be finished for that day.
- To turn off the alarm, press the button "ALARM" once. The alarm sound will stop. The bell icon and alarm time will be removed from the display. (see Fig.C)

Note: The alarm time will be stored by the clock. Press the button "ALARM" once, and the desired alarm time will appear on the display again.

- Snooze Operation -

- When your desired alarm time arrives, the bell icon starts flashing and the alarm sounds.
- To snooze the alarm, press the bar button "SNOOZE" once. The Bell Sound will stop and the backlight will turn on. (see Fig.C)
- When the "Snooze" button is pushed the symbol "zz" will flash for 10 minutes and then the alarm will sound again.
- To turn off the alarm during the Snooze cycle, press the "ALARM" button once. The symbol "zz", bell icon and alarm time will disappear from the display. (see Fig.C)

Setting the Time and Alarm Manually:

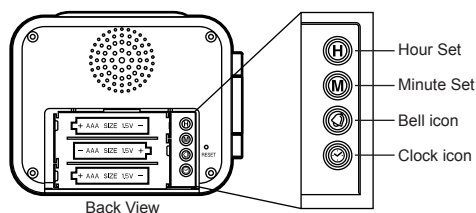


Fig.D

- Setting the Time -

- Remove battery cover. (see Fig.D)
- Press the button "CLOCK" and hold for 2 seconds. The light turns on and the time digits start flashing.
- Press the button "H" to set the hour.
- Press the button "M" to set the minute.
- Press the button "CLOCK" again. The digits stop flashing and the time is set.

- Alarm Set -

- Press the button "BELL" and hold for 2 seconds. The light turns on and the alarm time digits start flashing.
- Press the button "H" to set the hour.
- Press the button "M" to set the minute.
- Press the button "BELL" again. The digits stop flashing and the alarm time is set.

- Backlight Function -

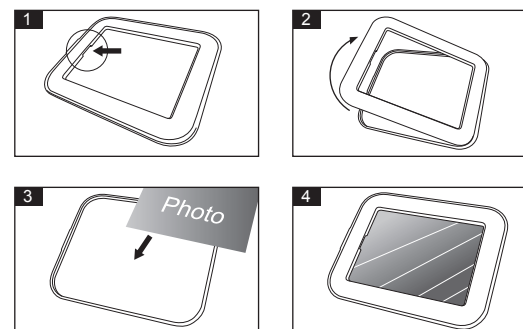
- Press the bar button "SNOOZE" and the light glows for 5 seconds. (see Fig.C)

Reset Function:

- In case irregular digits appear on display, or no display after batteries are installed, use a small pin and press the reset switch once. The clock will be reset and will display 12:00 for both the time and alarm.

- Changing the Photo in the Frame -

1. Take out the frame by pulling the open spot.
2. Insert your chosen photo into the frame.
3. Place the frame back.



Front

Back