

75MM

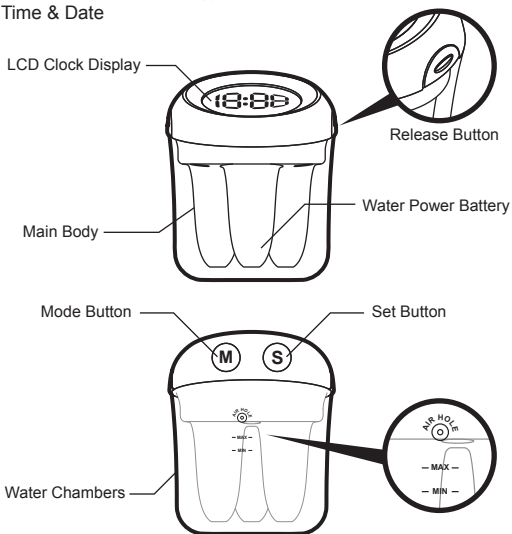
it. innovative technology.

ITGR-102

Water Powered Clock Instruction Manual

Features:

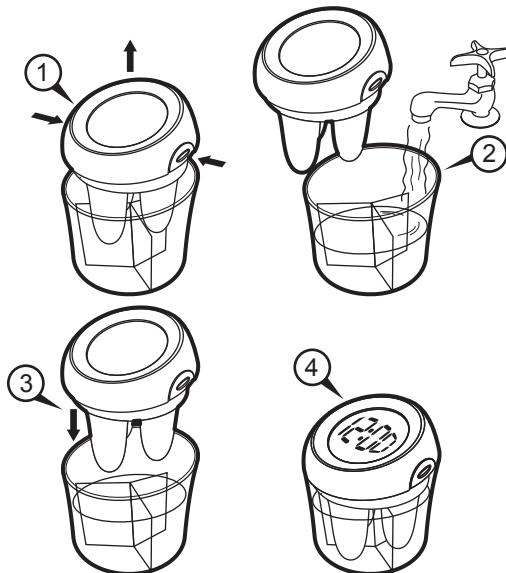
- Digital Clock
- Powered by Water Energy
- Time & Date



110MM

Operation:

1. To activate the clock, press the release button to take off the **Main Body**.
2. Fill in water to the **Water Chambers**. Do not over the water level indicating line "Max" or lower than "Min".
Note: It's better to use tap water than mineral waters. You may add a little salt into the water to optimize the performance of the clock.
3. Put the **Main Body** back into the **Water Chambers**.
4. After a few seconds, the clock will be powered up.



Front

-- Change The Mode Display -- (in normal display mode)

(M) = Mode Button (S) = Set Button

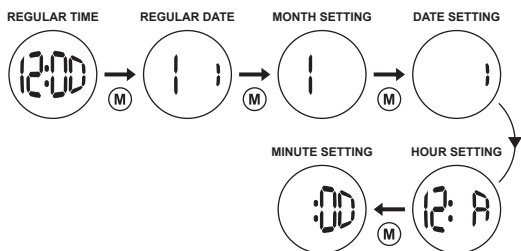
- Press (S) to change the mode.
Clock □ Month and Date □ Second
- Press (M) to change the order of the setting.
Clock □ Month and Date □ Set Month □ Set Date □ Set Hour □ Set Minute

-- Month and Date Setting -- (in normal display mode)

- Press (M) to month setting, then press (S) to set the Month.
- Press (M) again, then press (S) to set the Date.

-- Time Setting -- (in normal display mode)

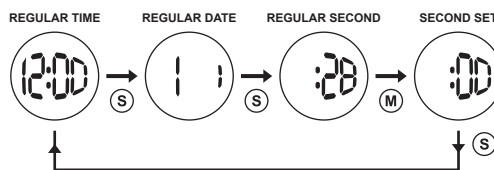
- Press (M) to hour setting, then press (S) to set the Hour.
- Press (M) again, then press (S) to set the Minute.
- Press (M) and then press (S) to confirm the time.
- Press (M) again, Time and Month and Date will exchange each other.



Note: The AM or PM will automatically change in the hours setting mode when set over 12 hours

-- Second Setting -- (in normal display mode)

- Press (S) to second mode, then press (M) to set the second to zero.



Note: The display will automatically return to regular time if it has been idle for about 2 seconds in the "regular date" display status

Maintenance:

- When the LCD clock display begins to fade, refill the water chambers with water.

Caution:

- The time will be kept for 2 minutes during this process.

Notice:



Don't Turn Over



Don't Shake

Item # ITGR-102
©2009 Innovative Technology.
4 Anchor Way,
Port Washington, NY 11050
www.ithomeproducts.com



Made in China

Back