



innovative technology.



ITNS-300

Quick Installation Guide

I. Unpack the ITNS-300



ITNS-300



Negative Film Holder



Slide Film Holder



CD-ROM



Quick Installation



User Manual



USB cable



Clean brush

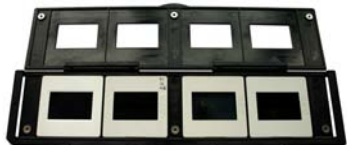
II. Install a film/slide into holder

Install the slide into holder:

1. Open the slide holder as illustrated



2. Put slide into positive slide slot



3. Close the slide holder



Install the negative film into holder:

1. Open the film holder as illustrated



2. Install film into negative film slot
3. Close the film holder



NOTE

- ✧ To avoid mirror image, follow the serial numbers (from left to right) on top of film when install negative film into holder.



Figure 1

- ✧ If the image is upside down [see fig. 2] , the image can be corrected by “Rotate” function in AP after capture [see fig. 3].



Figure 2

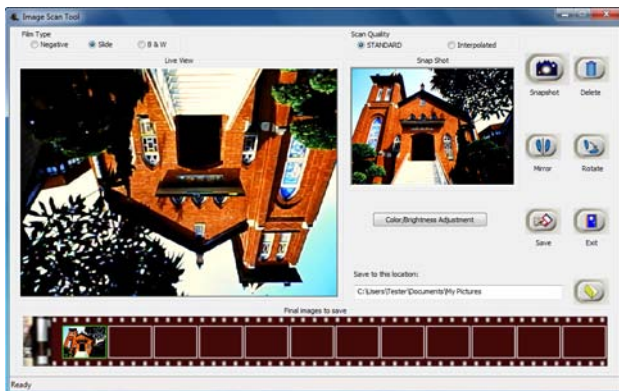
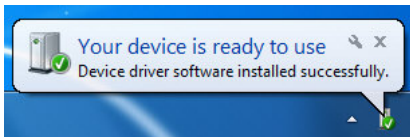


Figure 3

III. ITNS-300



Plug in USB cable to computer without installing any necessary driver. When the status icon on the left button corner shows information “Your device is ready to use”. The scanner is now ready to use. **Note:** *Although the scanner is driverless, you still have to install the CD ROM so you can use the “Launch Image Scan Tool” application.*



IV. Use ITNS-300

1. Put Film into film slot



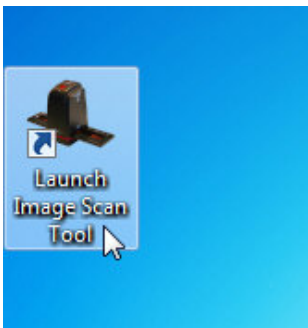
2. Insert the holder into ITNS-300



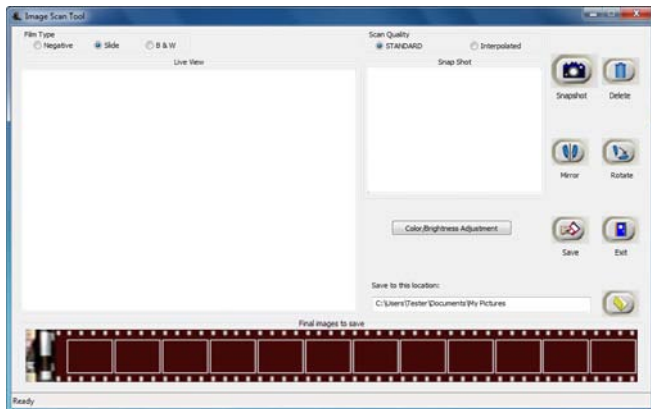
3. Make sure USB cable is connected to ITNS-300 and PC



4. On Desktop double click on “Launch Image Scan Tool” icon



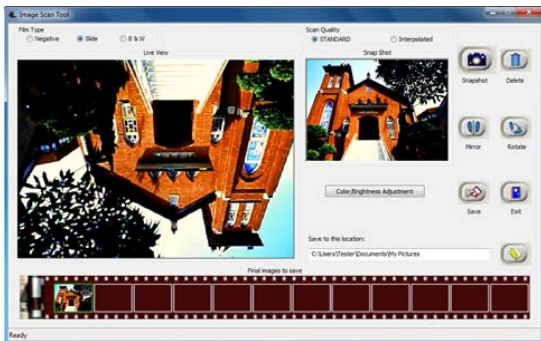
5. Click “Image Scan Tool” to enter operation interface as below



6. Press “Copy” hard button to capture the image to store in thumbnail.



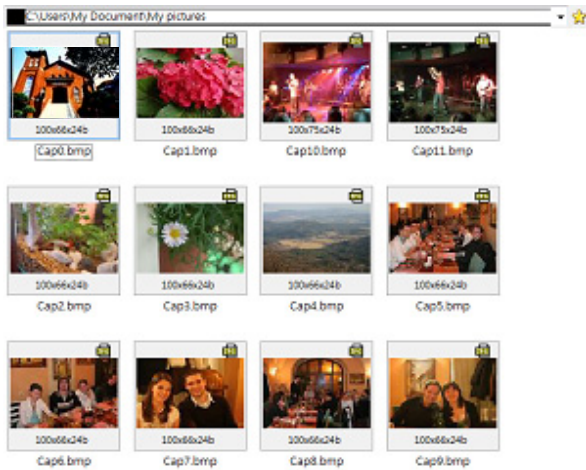
7. Click on function of mirror, rotate, color and brightness control to make image to prefer state.



8. Press Save to store captured images to your PC. The images stored in thumbnail bar are cleared after clicking save.



9. Retrieve saved images from your PC to further review and edit.





Instructions shall caution users that modifications not approved by the party responsible for compliance could void user's authority to operate the equipment.

The following or equivalent as appropriate:

“NOTE: This equipment has been tested and found to comply with the limits for a Class B digital device, pursuant to Part 15 of the FCC Rules. These limits are designed to provide reasonable protection against harmful interference in a residential installation. This equipment generates, uses and can radiate radio frequency energy and, if not installed and used in accordance with the instructions, may cause harmful interference to radio communications. However, there is no guarantee that interference will not occur in a particular installation.

If this equipment does cause harmful interference to radio or television reception, which can be determined by turning the equipment off and on, the user is encouraged to try to correct the interference by one or more of the following measures:

- Reorient or relocate the receiving antenna.
- Increase the separation between the equipment and receiver.
- Connect the equipment into an outlet on a circuit different from that to which the receiver is connected.
- Consult the dealer or an experienced radio/TV technician for help.”

Statement that the product complies with Part 15 (i.e. “This device complies with Part 15 of the FCC Rules. Operation is subject to the following two conditions: (1) This device may not cause harmful interference, and (2) this device must accept any interference received, including interference that may cause undesired operation.”)

CALIFORNIA PROP 65 WARNING

WARNING : This product contains chemicals known to the State of California to cause birth defects or other reproductive harm. For more information on these regulations and a list of chemicals, log on the following website address:

<http://www.oehha.ca.gov/prop65.html>

Innovative Technology Electronics Corp.
Limited Warranty: 90 Days Labor, One Year Parts

Innovative Technology Electronics Corp. (IT) warrants the product to be free from "Defects" in materials under normal use for a period of "One Year" from the date of the original purchase. The Warranty is "Not" transferable. IT agrees, within the initial "90 Day" period, to repair or replace the product if it is determined to be defective at "No Charge". It is further agreed that IT will cover the cost to repair or replace damaged "Parts" only for a total period of "One Year" from the date of the original purchase. The warranty does not cover cosmetic damage, antennas, AC cords, cabinets, headbands, ear-pads, or damage due to line power surges, connection to improper voltage supply or settings, misuse, mishandling, accident, acts of God or attempted repair by an unauthorized service agent.

To obtain service, the purchaser MUST present an original sales receipt / proof of purchase. Please contact us at www.ithomeproducts.com to request an RMA (Return Material Authorization) number to return products for service or replacement. Returns without an RMA number on the package will be refused and returned to sender. Upon receipt of the returning item and our full inspection (IT) may issue a replacement to customer for the same item or of one that has equivalent value and features. To return an item, supply full name, return address, phone number, item purchased, receipt of purchase and reason for return to obtain RMA number.

All returns must be in the original packaging or reasonable substitute to prevent damage.

Customer "Must" include full name, shipping address and telephone number inside of package. No return will be shipped back to a PO Box or APO address.

Please include your check or money order in the amount of

- **USD\$5.00** for items **\$10.00 to \$39.99 (Price Paid Per Unit)**
- **USD\$10.00** for items **\$40.00 to \$99.99. (Price Paid Per Unit)**
- **USD\$16.00**, for items **\$100.00 and up. (Price Paid Per Unit)**
- **Shipping fees are non-refundable**

to be payable to Innovative Technology Electronics Corp.(for handling and return

shipping charges) (IT) will not be responsible for delays or unprocessed claims resulting from a purchaser's failure to provide any / all of the necessary information.

Send all inquiries or RMA request via our website www.ithomeproducts.com/support.

Innovative Technology Electronics Corp.

1 Channel Drive

Port Washington, NY 11050

Toll free: 1-877-483-2497

Website for support: www.ithomeproducts.com/support

There are no express warranties except as listed above.

REPAIR OR REPLACEMENT AS PROVIDED UNDER THIS WARRANTY IS THE EXCLUSIVE REMEDY OF THE CUSTOMER, (IT) SHALL NOT BE LIABLE FOR ANY INCIDENTAL OR CONSEQUENTIAL DAMAGES FOR BREACH OF ANY EXPRESS OR IMPLIED WARRANTY ON THIS PRODUCT EXCEPT TO THE EXTENT PROHIBITED BY APPLICABLE LAW. ANY IMPLIED WARRANTY OF MERCHANTABILITY OR FITNESS FOR A PARTICULAR PURPOSE ON THIS PRODUCT IS LIMITED IN DURATION TO THE DURATION OF THIS WARRANTY.

Some states do not allow the exclusion or limitation of incidental or consequential damages, or limitations on how long an implied warranty lasts, so the above exclusions or limitations may not apply to you. This warranty gives you specific legal rights and you may also have other rights, which vary from state to state.

Version 2.01