



*innovative* technology.



# **ITNS-300**

## **Quick Installation Guide**

## ***I. Unpack the ITNS-300***



**ITNS-300**



**Slide Film Holder**

**Negative Film Holder**



**Quick Installation Guide**



**CD-ROM**



**USB cable**



**Cleaning Brush**



**User Manual**

## ***II. Driver Installation***

1. Insert unpacked CD into CD-ROM/DVD-ROM drive
2. Follow the on-screen instructions (XP/Vista/Windows 7)





### III. Using the ITNS-300

#### Function Indicator



### Installing film into the film holder:

#### Install Slide Film into the holder labelled "Slide Only" :

1. Open the slide holder as illustrated



2. Place slide in recessed slot in holder



3. Close the film holder



## **Install Negative Film into the holder Labelled “Negative Film Only” :**

1. Open the film holder as illustrated



2. Install film into negative film slot



3. Close the film holder



### **Note**

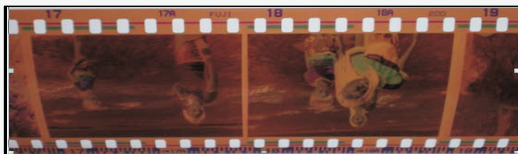
---

- ✧ To avoid mirror image, follow the serial numbers (from left to right) on top of film when installing negative film into holder.



*Figure 1*

- ✧ If the image is upside down [see fig. 2], the image can be corrected by “Rotate” function in Image Scan Tool after capture [see fig. 3].



*Figure 2*

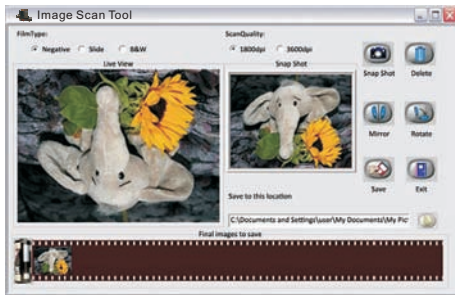


Figure 3

## How to use the ITNS-300

1. Put Film into film holder



2. Insert the holder into ITNS-300



3. Connect the ITNS-300 to PC



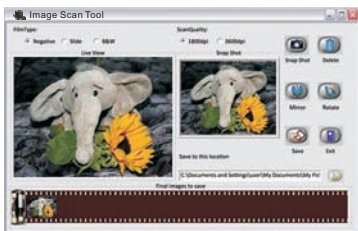
4. Double click Image Scan Tool to enter operation interface



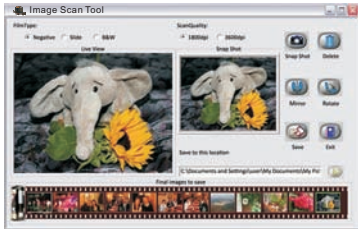
5. Press "Copy" button to capture the image



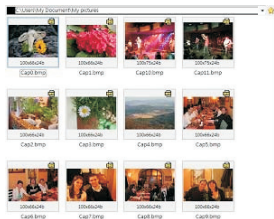
6. Process necessary modification by using the function buttons in right hand side



7. Save captured images to PC



8. Get final images from the PC for further review and editing







Instructions shall caution users that modifications not approved by the party responsible for compliance could void user's authority to operate the equipment.

The following or equivalent as appropriate:

“NOTE: This equipment has been tested and found to comply with the limits for a Class B digital device, pursuant to Part 15 of the FCC Rules. These limits are designed to provide reasonable protection against harmful interference in a residential installation. This equipment generates, uses and can radiate radio frequency energy and, if not installed and used in accordance with the instructions, may cause harmful interference to radio communications. However, there is no guarantee that interference will not occur in a particular installation.

If this equipment does cause harmful interference to radio or television reception, which can be determined by turning the equipment off and on, the user is encouraged to try to correct the interference by one or more of the following measures:

- Reorient or relocate the receiving antenna.
- Increase the separation between the equipment and receiver.
- Connect the equipment into an outlet on a circuit different from that to which the receiver is connected.
- Consult the dealer or an experienced radio/TV technician for help.”

Statement that the product complies with Part 15 (i.e. “This device complies with Part 15 of the FCC Rules. Operation is subject to the following two conditions: (1) This device may not cause harmful interference, and (2) this device must accept any interference received, including interference that may cause undesired operation.”)





